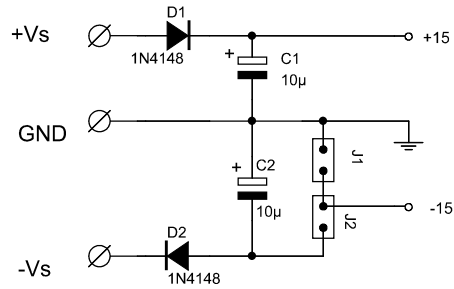
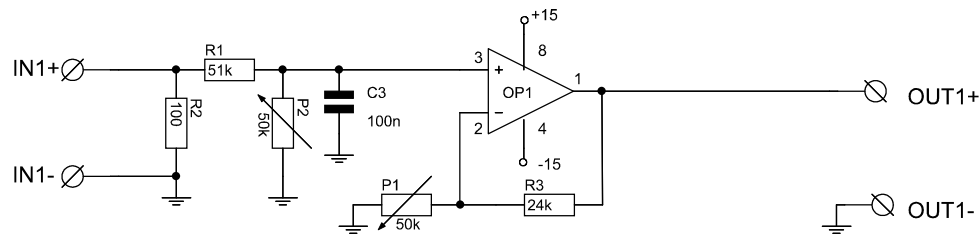


1

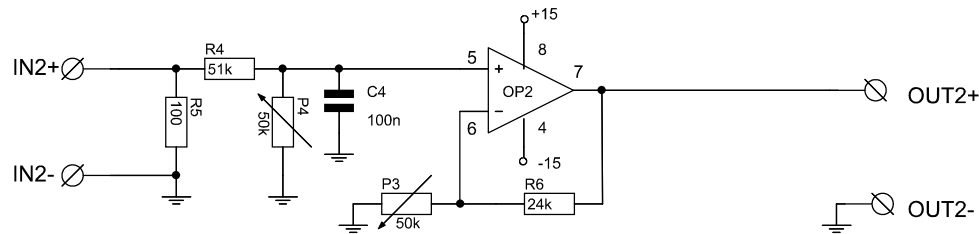


2



Amplifier 1 - P1 In, P2 Out
Voltage Divider 1 - P2 In, P1 Out

3



Amplifier 2 - P3 In, P4 Out
Voltage Divider 2 - P4 In, P3 Out

R2 and R5 only required for 0-20mA or 4-20mA signal

4

| Modifications | | Date | Name | Description | Page no. |
|---------------|------|------|------|----------------|-------------------|
| Date | Name | | | | Dual DC Amplifier |
| | | | | PFS 01/10/2006 | Pages |
| | | | | Schematic no. | |
| | | | | | |